

BRIEFING



TIMETABLE

•FRIDAY, April 29, 2022

09.00 – 20.00 OPENING RACE OFFICE

09.00 – 20.00 OPENING CHALLENGE RICCIONE EXPO

09.00 – 20.00 BIKE SERVICE C/O CHALLENGE RICCIONE EXPO

14.00 – 20.00 DELIVERY RACE KIT CHALLENGE RICCIONE SPRINT DISTANCE

•SATURDAY, May 1 , 2022

07.00 – 20.00 OPENING RACE OFFICE

07.00 – 11.00 DELIVERY RACE KIT CHALLENGE RICCIONE SPRINT DISTANCE

08.00 – 20.00 OPENING CHALLENGE RICCIONE EXPO

08.00 – 09.15 OPENING TRANSITION ZONE SPRINT TRIATHLON WOMEN

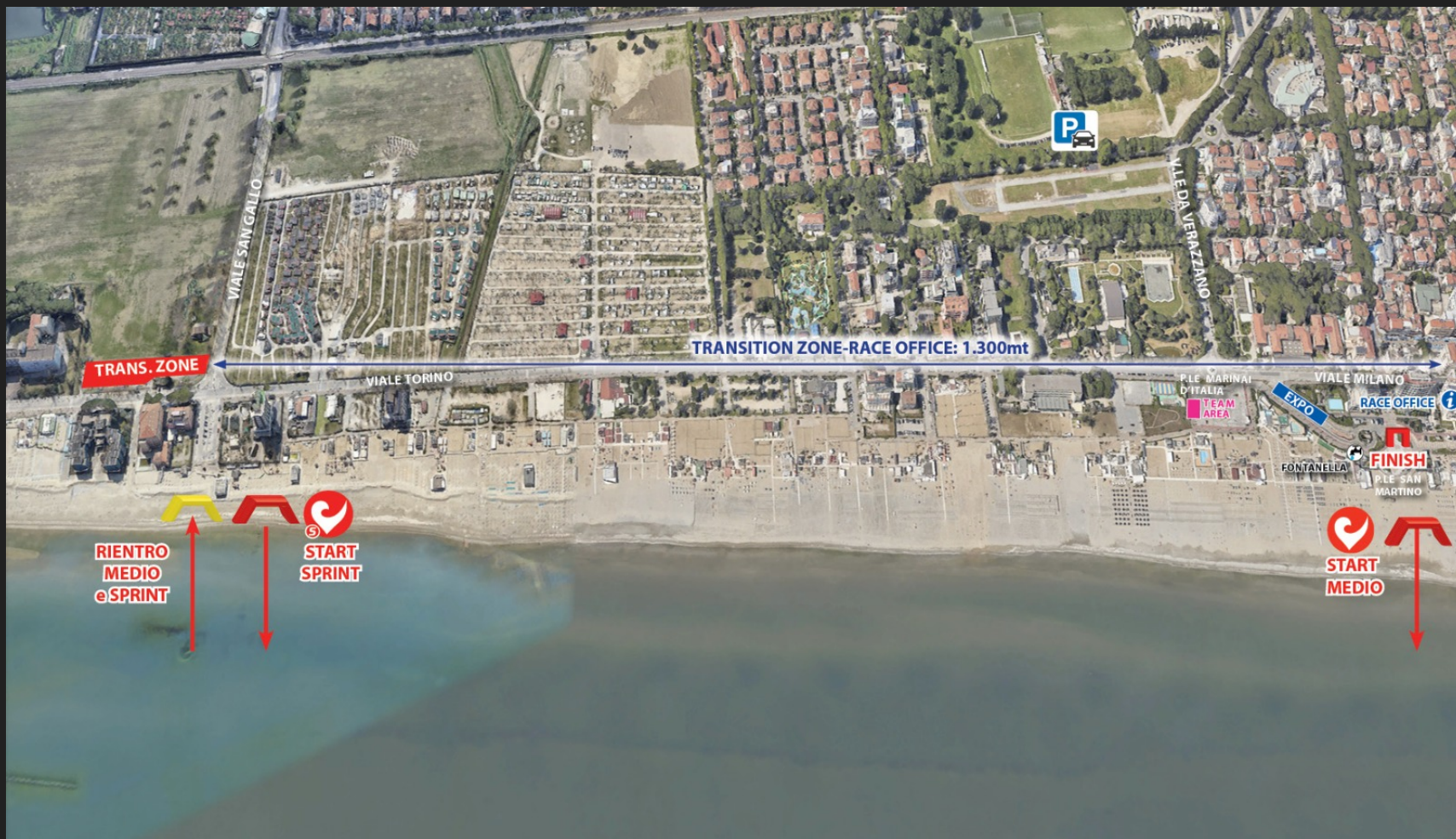
09.30 START I WAVE WOMEN SPRINT TRIATHLON “CITTA’ DI RICCIONE”

10.00 – 11.45 OPENING TRANSITION ZONE SPRINT TRIATHLON MEN

12.00 START I WAVE MEN SPRINT TRIATHLON “CITTA’ DI RICCIONE”

14.30 AWARD CEREMONY SPRINT TRIATHLON “CITTA’ DI RICCIONE”

RACE VENUE



RACE OFFICE PRE RACE



Segreteria pre-gara

www.challenge-riccione.com



 **Hotel
Corallo
Riccione**

E entrata principale segreteria per
ritiro pacco gara ed esecuzione
tamponi prenotati

U uscita segreteria

E entrata deposito
borse

U uscita deposito
borse

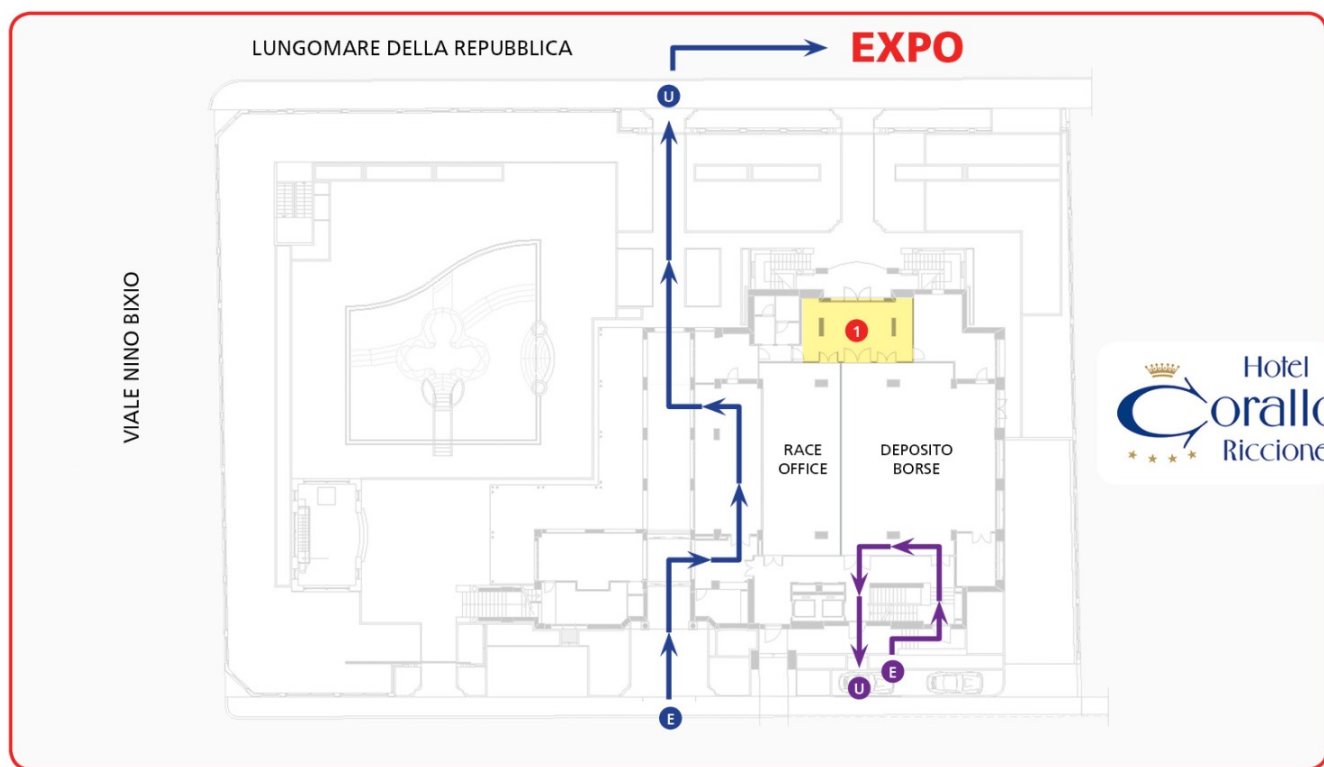
1 centrale operativa

RACE OFFICE POST RACE



Segreteria pre-gara

www.challenge-riccione.com



E entrata principale segreteria per ritiro pacco gara ed esecuzione tamponi prenotati

U uscita segreteria

E entrata deposito borse

U uscita deposito borse

1 centrale operativa

RACE KITS



1. BIB NUMBER



Race kit

www.challenge-riccione.it

2. TATTOO



3. PINS



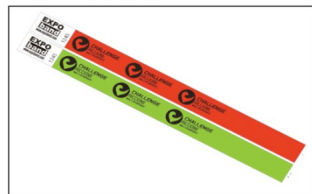
4. SWIM CAP



5. RACE STICKERS



6. WRISTBAND



7. PASTA PARTY TICKET



YOU WILL FIND :

- 1 BIB NUMBER
- 2 TATTOOS (1 FOR ARM, 1 FOR LEG)
- 2 SAFETY PINS
- 1 SWIM CAP
- RACE STICKERS (BAG, BIKE, 3 FOR HELMET)
- 1 WRISTBAND
- 1 PASTA PARTY TICKET

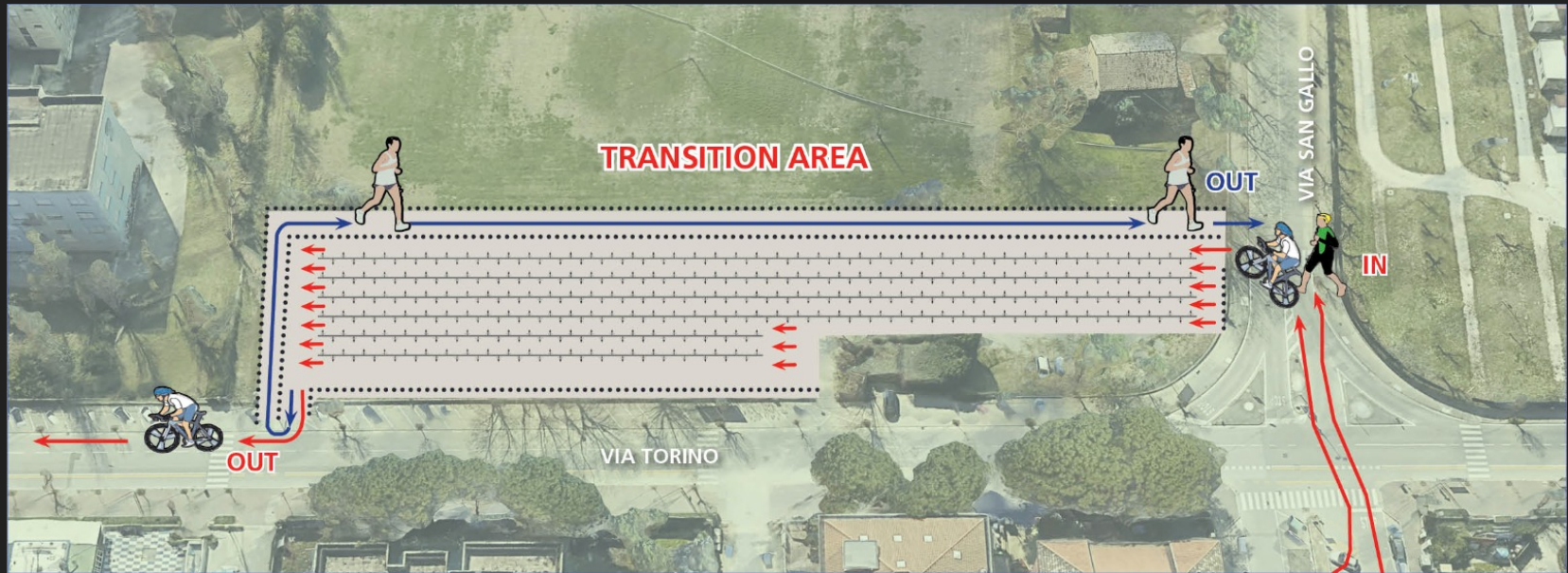
CHECK-IN

- Only the athletes who have completed the registration will be allowed to get to the transition area.
- **All athletes must complete the covid self-certification and hand it in at the entrance to the transition area**
- Chip is given at the entrance off the transition area
- Separate entrances will be created to avoid crowds as the map shows.

CHECK IN

SCHEDULE	CHECK POINT	BIBS
08.00 – 09.15 a.m.	A	DONNE
10.00 – 11.45 a.m.	A	UOMINI

TRANSITION ZONE



The transition area is in front of Piazza Kannedy.

The race bib needs to be left at your place on the rack. The materials for bike & run must be placed to the left of the bike (side of the chain)

The distance between the swim exit and the transition area is 250 meters.

TRANSITION ZONE

Art. 93.07 RULES AND REGULATIONS FITRI [...] Athletes are **allowed**, for any part of the race, except for the swim where the rules and regulations pertaining to the use of the wetsuit apply, **to use additional protection against the cold or rain.** The athlete can [...] remove the protection at any moment by placing it in their area in the Transition Area and are not allowed to abandon it along the road or give it to a third party[...]




Art. 101.10 RULES AND REGULATIONS OF FITRI In case of bad weather the Technical Delegate, if present, or a Race Official, may authorize the use of suitable protective material for the materials deposited in the T.A. so that these do not get wet or become unusable; **the protective material must in any case not cause damage to and / or hinder other athletes.**

START PROCEDURES

- The start is from the Free Beach in front of Piazzale Kennedy
- The athletes have to be on the beach 15' before the start
- The athletes must wear the mask until the entrance of the final box

START PROCEDURES

Start

	START	BIBS	SWIM CAP
1	9.30 a.m.	WOMEN	
2	12.00 a.m.	1 – 180	
3	12.02 a.m.	181 – 310	

Athletes must
wear the mask
until a few
moments
before the start

SWIM COURSE



OFFICIAL SWIM SPONSOR

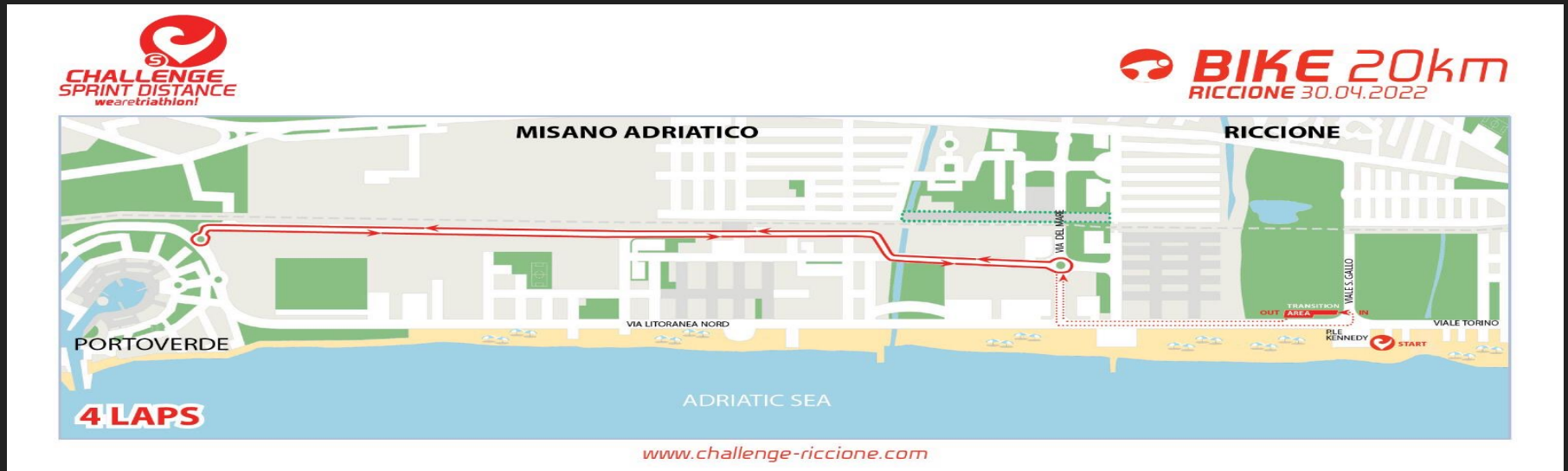
The swim course will be marked by 2 principal RED buoys to be kept to the **RIGHT**

Directional buoys of different colors will be placed along the swim course; they can be overtaken on both sides



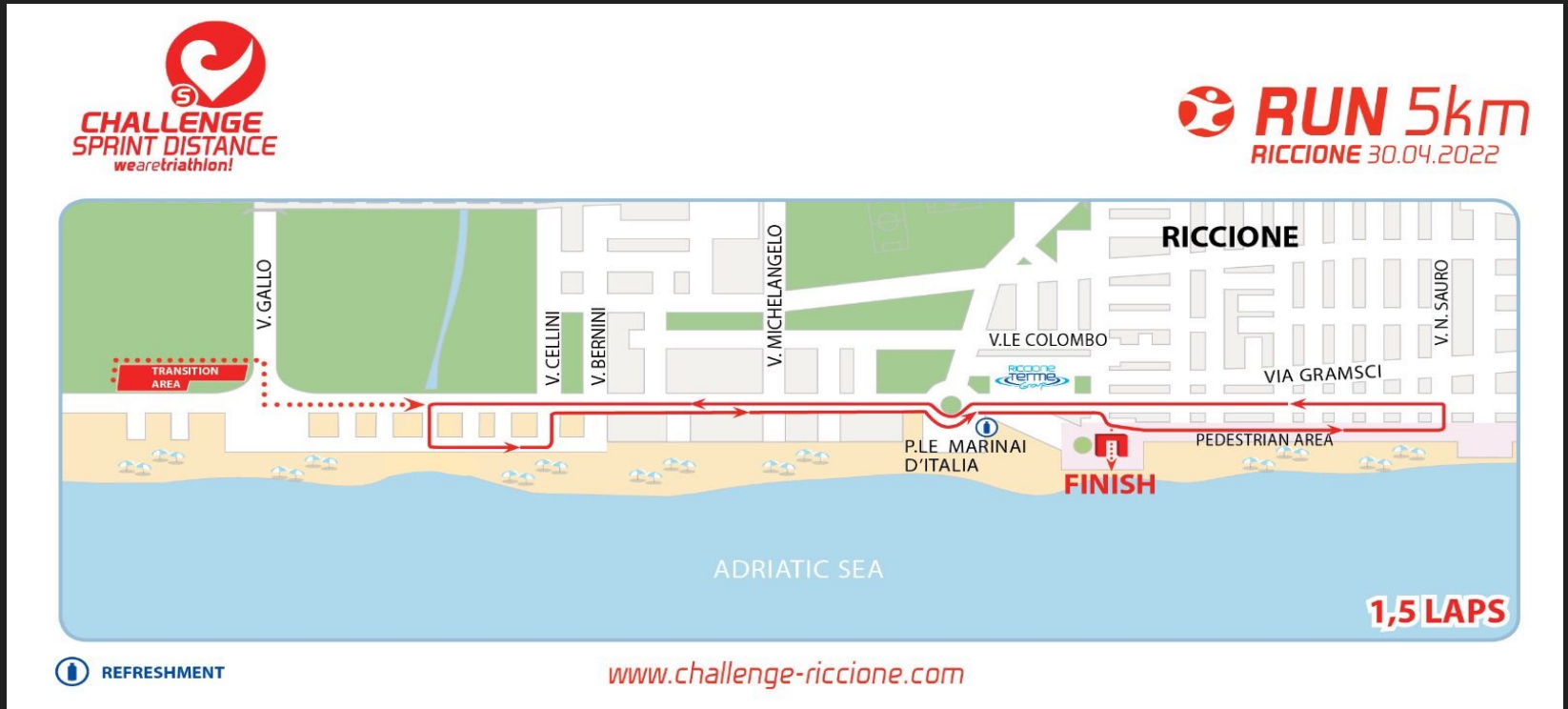
BIKE COURSE

The bike course will be developed on the promenade between Riccione and Misano Adriatico, on a multilap of 5km (4 laps overall). The race will be no draft-legal. Only road bike are allowed (No TT Bikes).



LOSA

RUN COURSE



A junction of 1590m + 1 lap of 3410m totally flat to be run anti-clockwise.

There will be 1 aid station for each lap on Piazzale Marinai D'Italia

FINISH LINE

FINISHER athletes will be given after arrival:

- Mask
- Bottle of SAN BENEDETTO water
- Medal

The athletes will follow a guided tour that will take them to the HOTEL CORALLO to take their bags and pasta party .

The pasta party will be at Hotel Corallo Restaurant : the mask is mandatory

FINISH LINE



AID STATIONS

- RUN COURSE AID STATION: There will be in Piazza Marinai D'Italia
- LITTERING ZONE: the area will start 20mt before the aid station and will finish 150mt after it; the start and the finish will be clearly highlighted with signboards and lines on the ground.
- In accordance with the race rules, the referees present will pay particular attention to whether athletes respect the environment
- At the finish line there will be a energy point Redbull.



CATEGORIES

Below the categories on race day:

- YB : 16 -17
- JU :18 - 19
- S1 : 20-24
- S2 : 25-29
- S3 : 30-34
- S4 : 35-39
- M1 : 40-44
- M2 : 45-49
- M3 : 50-54
- M4 : 55-59
- M5 : 60-64
- M6 : 65-69
- M7: 70-74
- M8: 75-79

TIME PENALTY

- Time penalty in TRANSITION 1 (for all infractions committed up to this point): the Judge will show a yellow card when the athlete arrives at their station and will order them to stop without touching their material.
- Unsportive behavior or dangerous driving will be sanctioned with immediate disqualification and referral

AWARD CEREMONY

Every finisher will receive a medal

The first 5 men and women will be awarded with a prize money

The first 3 men and women of the following age groups will also be awarded:
YB, JUNIORES, 20-24, 25-29, 30-34, 35-39, 40-44, 45-49, 50-54, 55-59, 60-64, 65-69, 70-74, 75-79

SERVICES

- BAGS DEPOSIT : Hotel Corallo . A bag will be given to each athlete in which they must put their own bag
- LUNCH BAG : Hotel Corallo
- BIKE SERVICE at STAND ADVANCED



USEFUL TELEPHONE NUMBERS

EMERGENCY : phone: 113

POLICE: phone: 112

FIRST AID: phone: 118

COORDINATOR RED CROSS : Dott. Leonardo Manzo +39 3332486556

Riccione “Ceccarini” Hospital

Via Frosinone, Riccione

Tel. +39 0541 608617

Rimini “Infermi” Hospital

Viale Luigi Settembrini, Rimini

Phone. +39 0541 705111

Race Office : Romina Ridolfi Cell. : +39 333 4664711